

St. Henry, Ohio A Historical Tour 2003

Compiled by Jane Woods

Information from Joyce Alig's books on
St. Henry and Mercer County and from
many citizens of St. Henry.

Sincere thanks and appreciation is given to Joyce Alig and the Mercer County Historical Society for allowing me to use the information from the following books:

Mercer County, Ohio History 1978 (1980)

A History of Saint Henry, Ohio (1972)

Saint Henry, Ohio Sesquicentennial 1837-1987 (1989)

Also a special thanks goes to the citizens of St. Henry who were contacted to help me make this book as accurate as possible. If errors are found, they were unintentional. If you can correct anything historically, please let me know.

Thanks,
Jane Woods



This was a project to help celebrate Ohio's Bicentennial.

Historical Sites of St. Henry, Ohio (updated 2003)

1. St. Henry Park and Pool (1975)
2. Sewage Treatment Plant (1966)
3. Broom Factory (Henry Rinderle) 1912 121 Kremer-Hoying Rd.

4. Pioneer Canning and Manufacturing Co. 1907-1928 (whole wheat cereal, tomatoes, etc.) Beckman & Gast Co. (Lewis Gast and Luke Beckman) 1928-- (over the years red beets, carrots, pumpkin, dry beans, turtle soup, "Friday Chili" (chili with turtle meat), tomatoes, and green beans were canned. In 1950 Beckman and Gast Co. was sold to Lewis Gast and sons. The Brewery Pond from which ice was removed and sold by Fullenkamps in the early 1930's and then used for fishing and swimming (until 1960's) was east of the buildings. It is now filled in.

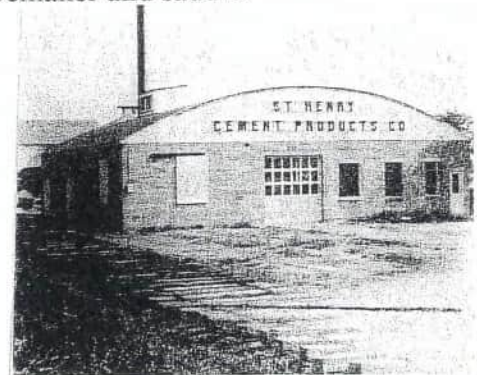


Old canning factory

5. Tile Factory—today site of Larry Wenning's pond (often referred to as Lammers's-- after previous owner Linus Lammers) at 381 W. Kremer-Hoying Rd.—clay was dug to make the tile, making the ponds—late 1800's to early 1900's.

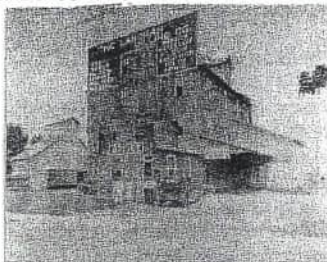
6. Mrs. Weingartner Tannery—371 Western Ave.—leather shoemaker and saddler—1896-1909

7. St. Henry Tile and Ready Mix Co., Inc.—Herman Knapke (early 1900's) bought it from Ben Macke. Knapke sold coal, cement, and gravel and made cement tile and block in the building on the north side of Washington St. Linus Lammers owned it from 1946-1960. Al Homan, Bob Boeckman, and Ray Kremer purchased it in 1960 and in 1966 added ready mix and other building supplies. In 1968 land was purchased on the south side of Washington St. where the main office is now located.

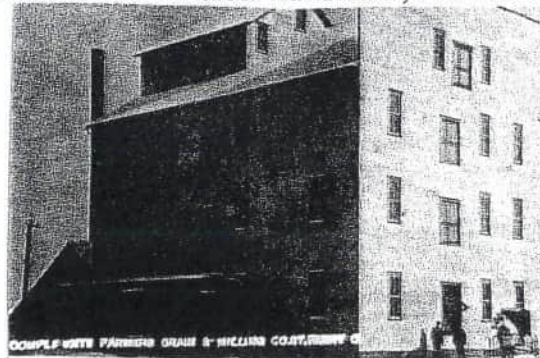


Laying new siding for Linus' factory. 1946.

8. Fox & Hess Mill 331 Western Ave. 1901-1958 (torn down in 1958) Leroy Rutschilling built on this site and a building for his sawmill, but in 1998 he sold the building to Mercer Landmark, Inc. and it continues as that today. This site was located west of the former railroad tracks and west of the main Mercer Landmark, Inc. building. Refer also to #9.



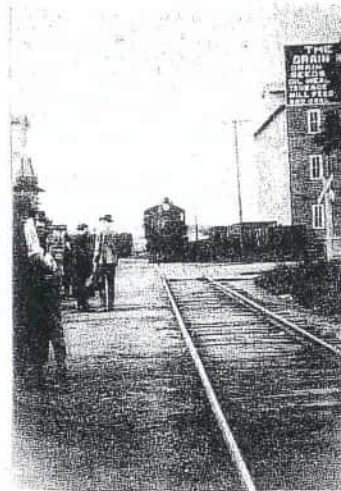
*The Landman Milling Co.
Fox and Hess (Left side)*



Farmers Grain and Milling Co.

9. Farmers Grain and Milling Co. 1910 (later called Landman Milling Co. and the United Grain and Milling Co.) It has been Landmark since 1957.

The train is coming from the north.
Farmers Grain and Milling is on the right,
and Fox and Hess is on the left.



10. Bany Washing Machine Factory 1890's-1907

Storm Buggy Factory 1910

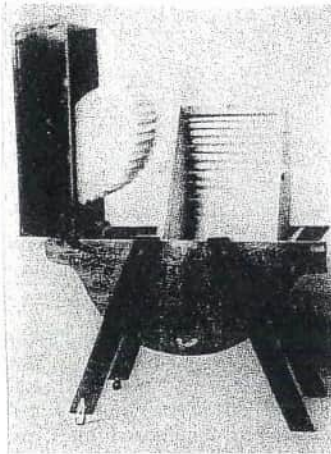
Farm implement storage

A garage

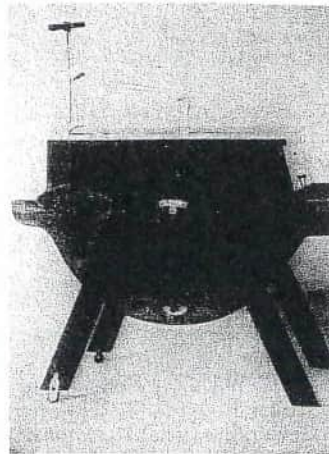
Cement roller plant

Land-o-dance (Julius Rose)

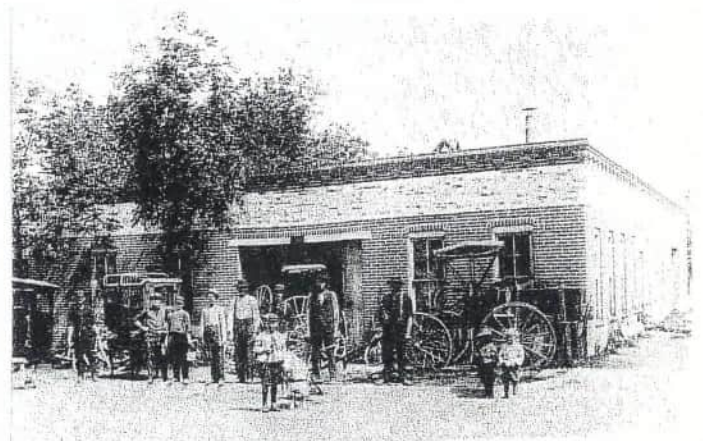
St. Henry American Legion Hall 1945—the building burned down in July, 1999. The St. Henry American Legion Post 648 dedicated their new hall at 341 W. Main St. on March 25, 2001. The St. Henry Nite Club was on the west side. After the fire they rebuilt at 262 W. Main St.



Washing machine open



Washing machine closed



Buggy Factory:

Tony Batter, Henry and Chris Ranly, Frank Fry, Henry Wimmers, Joe Ranly, George Boskin, Sebastian Ranly, Matt Sonderhaus with his goat.

11. Mrs. Jacob Bany built the building at 301 W. Main St. in 1910

South side of building—wallpaper (west section)

---pianos (center section) (Note: 3 doors on the south side)

---ice cream parlor (east section)

Harry Romer's dry goods store 1920's

Grocery store 1930's

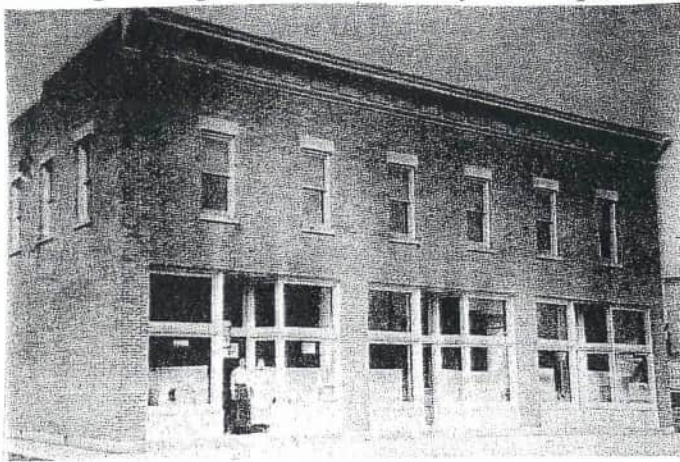
(continued on next page.)

Dances and programs on the second floor

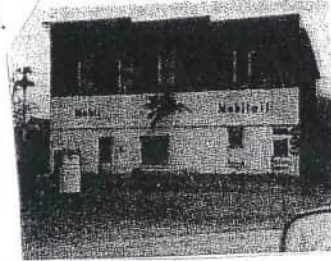
Mobil Service Station 1937---Charles (Tubbie) Schrage 1937-1957

---Nip Wehrkamp 1957-1970

---Ron Moeller 1970---It is now called Ron's Service, and it no longer is a gas station but strictly a car repair/service station.



Bany Building



12. 331 Western Ave. Bimel Wheel and Spoke Factory (later known as the Bimel Handle Factory 1899-1910

Hartings Sawmill 1910-1952

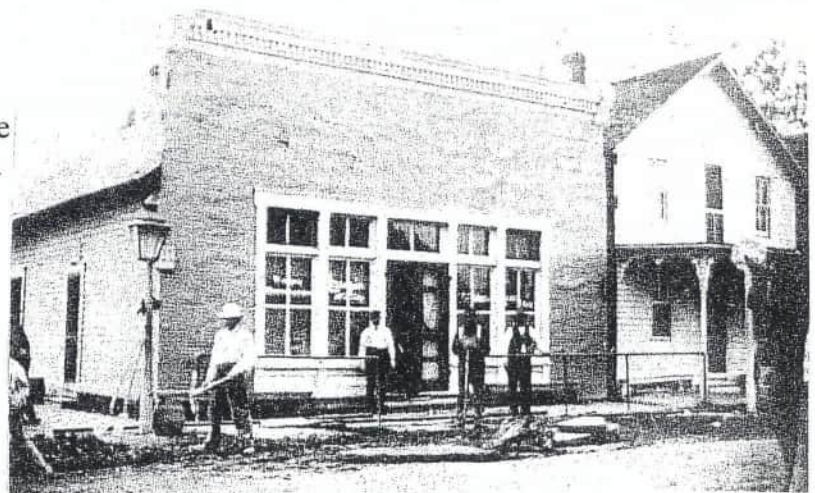
Rutschilling Sawmill 1952—1998 and lawnmower and chainsaws (1962-1981)

In 1998 this business was sold to Mercer Landmark, Inc.

The sawmill which was on Washington St. in back of 331 Western Ave. was completely destroyed by fire in 1966, so it was rebuilt and enlarged. A building of the St. Henry Tile and Ready Mix Co., Inc. 1998---

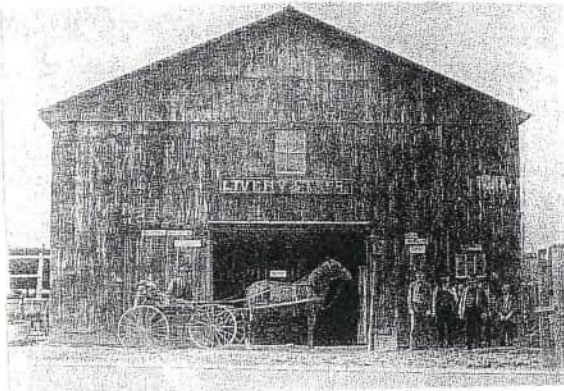
13. City Hotel late 1800's (west of Fishmo's) was eventually torn down.

City Hotel on the west (right) side
Present-day Fishmo's on the east.
(refer to #14 on the next page)

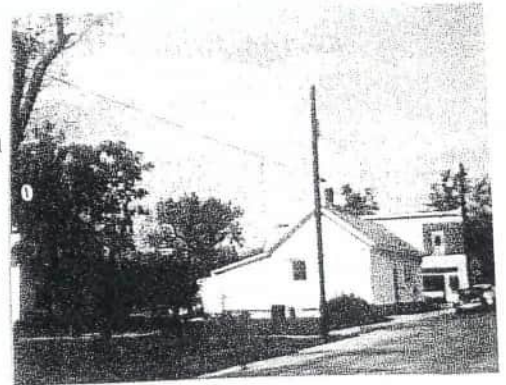


14. Since the 1890's, the owners of 312 West Main St. have been Henry Langenkamp (1890's), Louis Kothman (1901-1908), John Vondrell (1920's), Ray Fullenkamp, Ted Nordenbrock, Henry (Buck)Thieman, and Carl (Kite) Dues (1961-1982 as Kite and Katy's), and Dave (Fishmo) Stammen (1982-1996 as Fishmo's). It continues to be Fishmo's, but the owner is now Matt Stelzer since 1996. At one time a barber did business in the building (Herman Lefeld and Lawrence Sonderman)

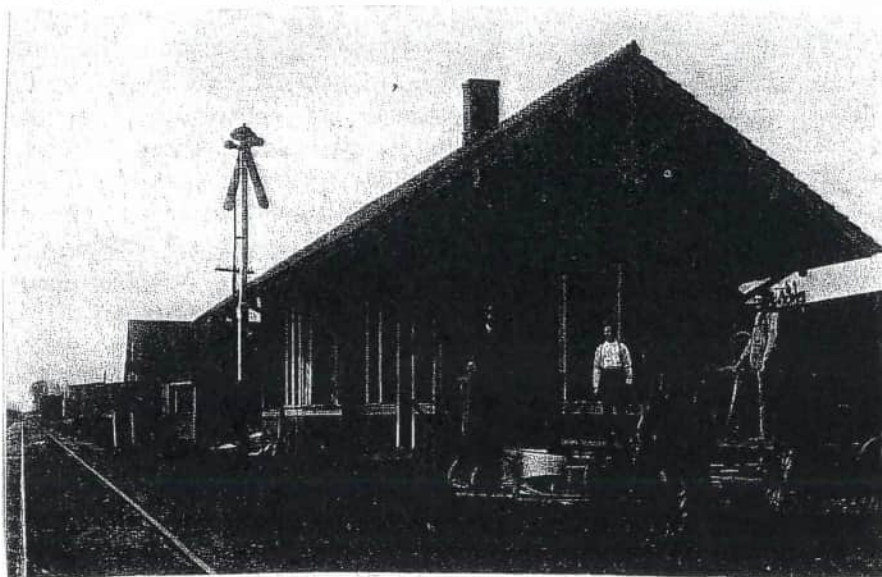
15. Livery barn 1890-1920's south of Fishmo's. It was built by Clemmens Meinerding, and his son, H.C. Meinerding, eventually took over. Andrew Buschor took over next, until he closed it in the 1920's. It was torn down in 1954.



The livery barn in the left photo as in 1897. H.C. Meinerding is shown on the livery wagon. It was on the site south of Fishmo's as shown in the photo to the right.



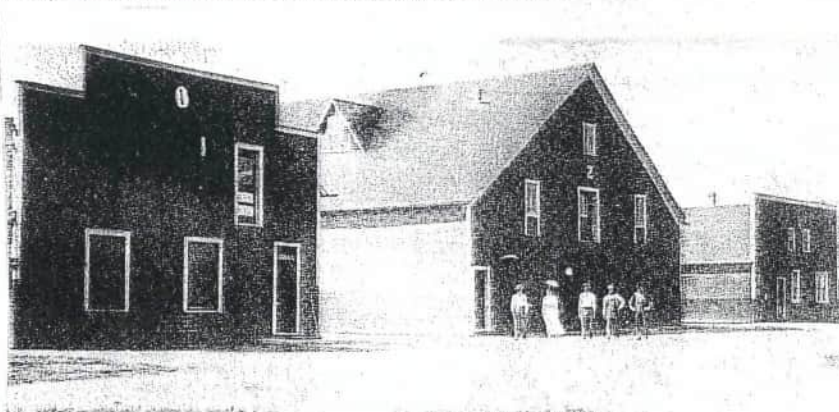
16. Railroad station (1883-1971). Fire destroyed the first one in 1906, and within a few months a new one was built for the Cincinnati Northern Railroad. It was torn down in 1965. In 1906 when the new railroad station was built, Ben Spoltman was the ticket agent, Henry Meinerding was an assistant and baggage man, and John M. Tohle was the drayman (someone whose work is hauling by a dray which is a strong low cart or wagon without sides) (Shown in the photo below.)



17. Poultry House (collection point for poultry and eggs) 1927-1940's. It became a building of Schockman Lumber Co. about 1949.

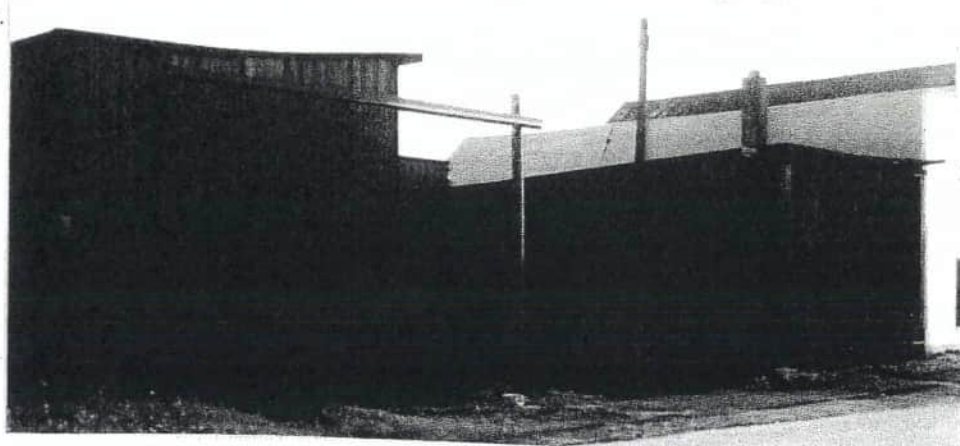
18. 342 W. Columbus St. P. Kuntz and Herr Lumber Co. 1896-1944. In 1944 Louis, Clarence, and Carl Schockman bought it from Joe Moeller and Henry Fiely, and it became Schockman Lumber Co. Al and Ruth Romer purchased it in 1977. In 1990 it was purchased by Mark and Jeff Bruns, but it still carries the Schockman name.

Early photo:
Joe Moeller
Emma Moeller (Joe's wife)
Ben Kessen
Pete Studer
Henry Fiely

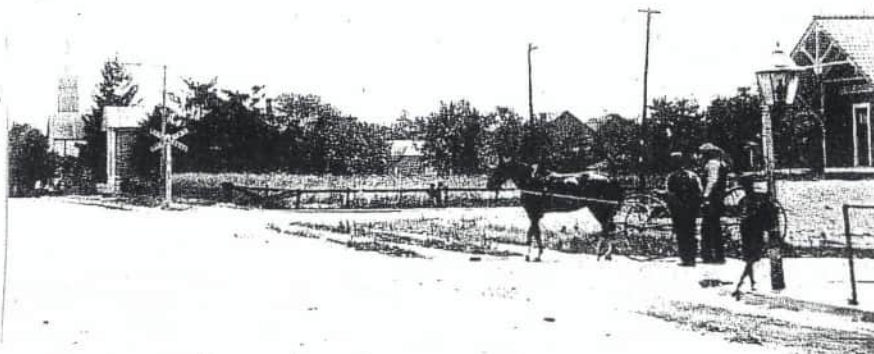


19. Flour Mill 1885-1908 (burned down) behind Schockman's office. As a flour mill, it had made "White Queen" and "Log Cabin" patent wheat flour and whole wheat flour and custom grinding.

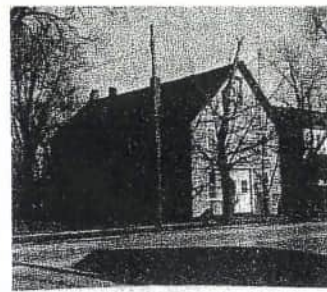
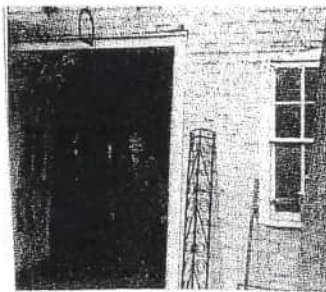
20. Stockyards early 1900's.
It continues to be Kleinhenz's
Stockyards today.



Note: The photo to the right is Main St. around 1908 looking towards the east.

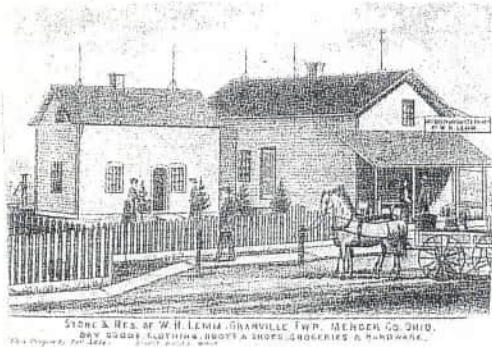


21. William Uhlenhake blacksmith
241 W. Main St. 1911-1951.
It is now the residence of the
Mike Eyink family.



22. Siegrist Saddle and Shoemaker 1897- _____ W. Main St. (west of what was Lefeld Hardware)

23. 202 W. Main St.--Wm. Lemm's Dry Goods 1882-1892 and Romers 1892-1904
Schuerman Hardware 1904-1949 He bought the business from Tumbusch and Gardner at
the site of Mobil Bulk Plant.
Feldhake Hardware 1949-1959. Al Feldhake bought it from his mother—Mrs. Anton
Schuerman. (Mr. Schuerman had died in 1916.)
Lefeld's Hardware 1959-1995 and Albers TV 1982-19



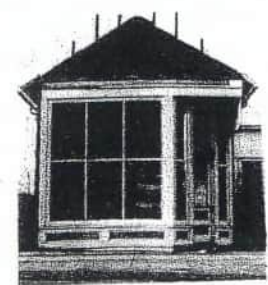
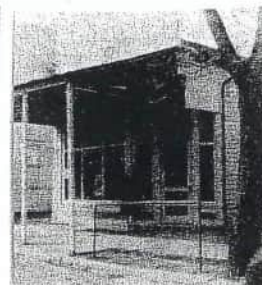
Lemm Building



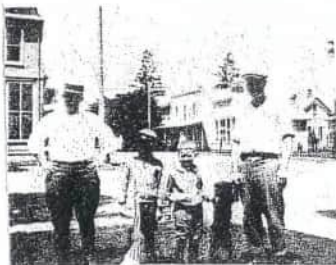
Lefeld Hardware

24. 131 W. Main St. Ben Uhlenhake built it in the 1920's Through the years it has been
the mayor's office, a shoe shop, a butcher shop (1934-1942), Urban Borger's barber
shop, Bruns barber shop (1934-1942), Ben Romer's grocery store (1942-1950), the post
office (1950-1968), the Bittersweete Flower Shoppe (1968-1980's), and Roger's Flowers.
The Home Place started their business here in 1987 and moved to the east end of Main St.
in 1988. It is now an apartment only. There has been an apartment above the business
below it for many years.

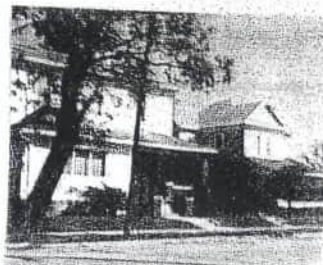
25. Joseph Drahman Harness Shop—121 W. Main St.—late 1880's—next to the old
Lammers's house which is also torn down today. B.J. Lammers Harness Shop (1895-
1944). The left photo below shows the Joseph Drahman Harness Shop and Residence.
The right photo shows the Lammers Shop before and after 1944.



26. 111 W. Main St. Gebele Saloon ?-1904
 Sunderhaus Hotel 1904-1927
 Palm Hotel (Kemper) 1927-1929
 Ed Kemper Funeral Home 1929-1953
 Kemper's home until they died—then remodeled into house/apartments

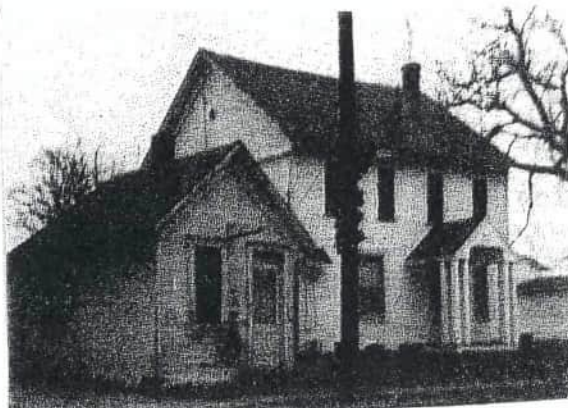


Palm Hotel



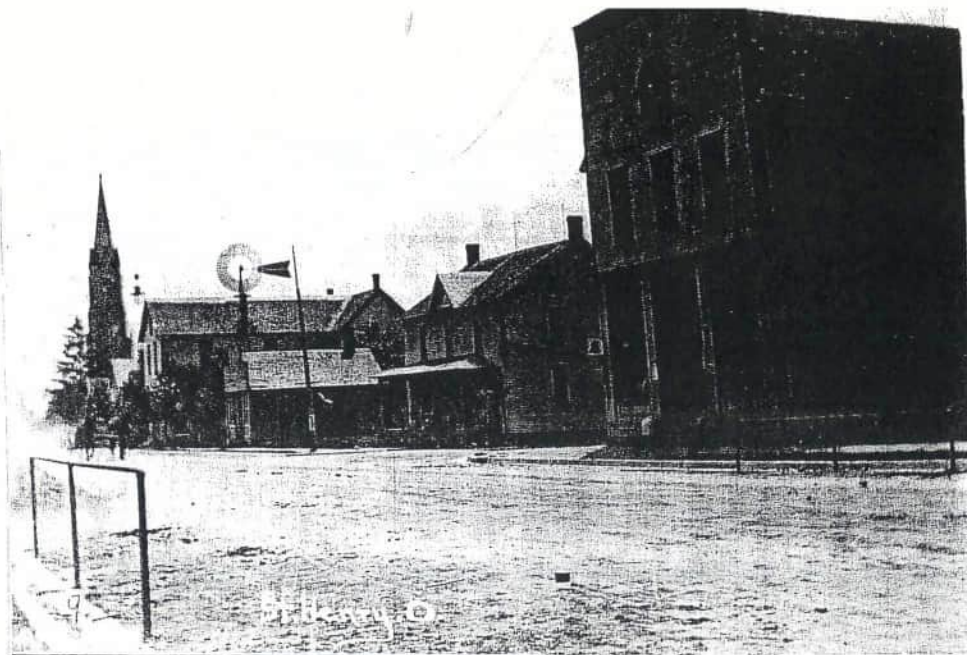
Kemper home to the left

27. Dr. Shirack's office 1902-?
 (now torn down)
 to the left in the photo



28. Bruns General Store (1898--?)
 Pazitney Bakery (1959-1958)
 Kohn's Dry Cleaners 1959-1963
 Rammel Dry Cleaning 1963

Note: (in the photo on the next page) Main Street in 1906 close to the intersection of Main and Sycamore Streets. The building to the right would probably be Bruns General Store. There were curbs and cement sidewalks in 1906 with crushed gravel on the street. The church did not have a clock until 1914. The first street lights were gas in 1906. Electric lights came in 1915. A cement street was put down in 1925.



29. 162 N. Sycamore St. Henry Wimmers Upholstery Shop
Lefeld's Plumbing 1955-1962 (moved business to Main St.)
Now a private residence

30. 182 N. Sycamore St.
St. Henry Glove Co. (gloves and mittens) 1908-1913
Mike Niekamp private residence today

31. 232 N. Sycamore St.--St. Henry Firehouse was built in 1958. The fire department formed after the 1905 fire. The firehouse was here until it moved to 550 E. Kremer-Hoying Rd. in 1991. Today the building at 232 N. Sycamore St. houses the police department along with the mayor's office and the village council chambers.

32. Old water tower 1909-1971.
For many years lights were strung
on the tower in the shape of a
Christmas tree. The water tower
was replaced in 1971.



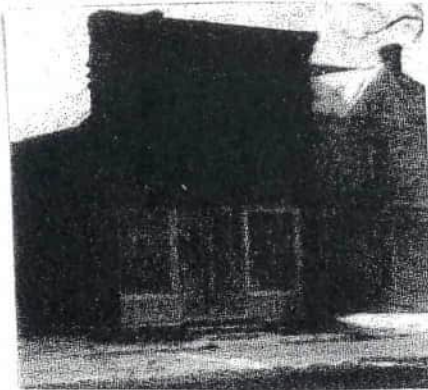
33. 101 E. Main St. Mrs. Anna Westerheide had her hat shop here from about 1922 to 1934. (She previously had her store in J.J. Romer's General Store). Nora Romer (George Romer's widow) moved into it by 1937. John (Jack) and Odelia Stammen bought the house in 1945 and lived there until 1989 when Randy Luttmmer bought it. The Kevin Luttmmer family has lived there since 1991.

34. J.J. Schollosser Butcher Shop 122 E. Main St. 1889-1928

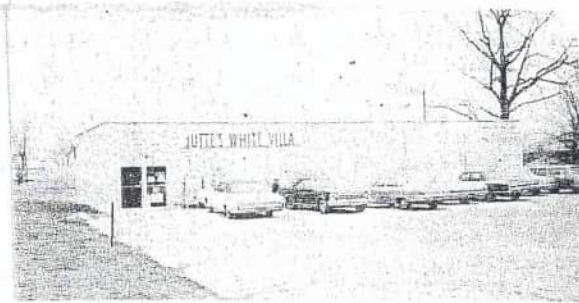
Luttmer Shoemaker 1928-?

Part of Auggie Jutte's store 1967-1971 (He built a new building in back of the K of C building for his grocery store.)

This building was torn down and is now part of the apartments at the corner of Main St. and Sycamore St.



The Schlosser Building in 1971



Jutte's White Villa Grocery in 1971

35. 112/122 E. Main St. Schoeneberger Blacksmith Shop 1897-1923 with a dance hall on the second floor.

Wm. McMinnis Groceries 1930-1934

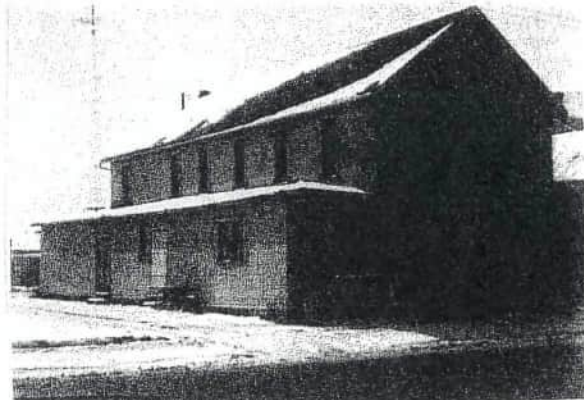
Julius Bruns' Groceries 1934-1965

Auggie Jutte White Villa grocery store 1965-1971

Bertke's T.V. 1971-1983

Huelsman Automotive, Inc. 1983-1988

Remodeled into apartments on both floors



36. Lot east of #35 above—tavern and restaurant with various owners (Henry Feldhake-1890's, Henry Kevelder—early 1900's, Bob Sutter—1920's, John Vondrell, Carl Knapke "Chick's Place"—1950-1955, Rinderle Brothers—1955-1957, Donald Frilling—1957-1963 when the building burned down)



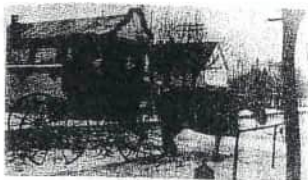
Frilling's
Restaurant (left)
Chick's
Place (right)



37. 121 E Main St. 1965 Ray and Mildred Wuebker bought an apartment building (on the site of their home today) from Jesse Schlegel to enlarge the parking lot of the Laundromat and to build a car wash which opened in 1965. The building between 1913 and 1950 was the St. Henry Post Office. In 1977 they tore down the apartment building and built their home and Wuebker's Pennzoil which is today Hemmelgarn Marathon.

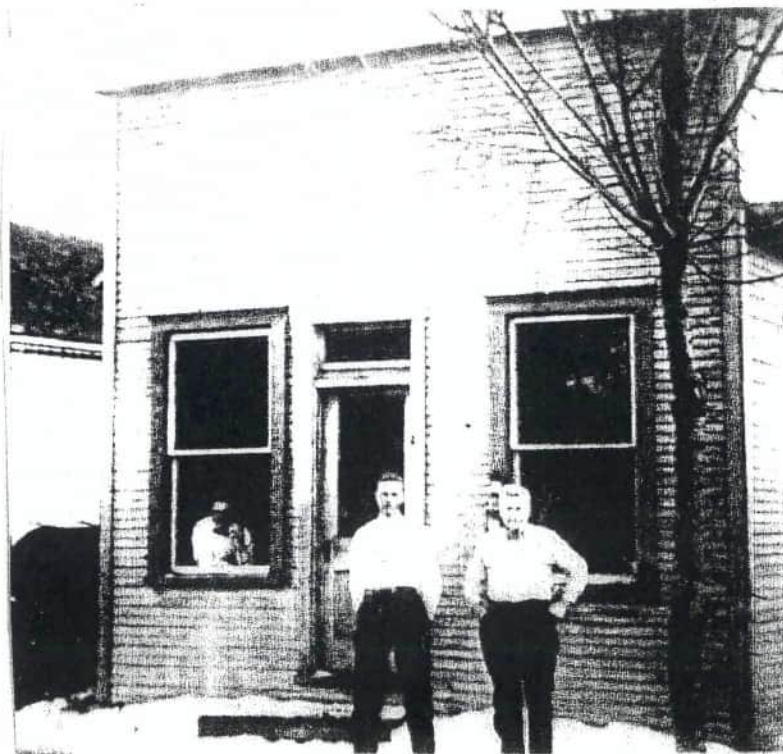


38. 131 E. Main St. Albert Gulde's Clothing Store 1884-1904, then Bernard Forstoefel's General Store, and then Uhlenhake's Butcher Shop. In 1963 Ray Wuebker had the old building torn down to build the St. Henry Laundromat (Ray and Mildred Wuebker) 1963-1980 when Tom and Vicki Wuebker revamped the building and installed an office and showroom for St. Henry Lumber and Supply. At the same time a warehouse was built to store the lumber and building supplies (building was built behind Wuebker's Pennzoil. Wuebker Pennzoil is Hemmelgarn Marathon today.) St. Henry Lumber and Supply closed after 1987, and today it is the office of Randy Evers Real Estate and Auction Co.



Gulde's Store with a storm buggy in front Two views of Uhlenhake's building in 1963

39. West of 150 E. Main St. is the site of the former Bruns Barber Shop pictured below.

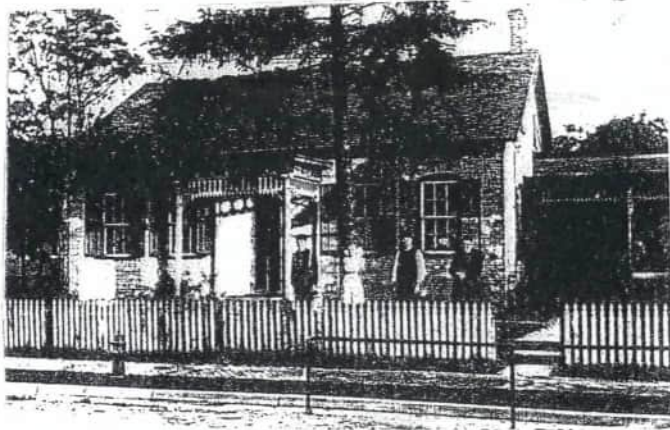


40. 150 E. Main St. John Panning Hardware and Roofing 1877-1927

A.J. Gels Cream Station 1930-

Al Vondrell Cabinet Shop 1955-1968

Buschur's Refrigeration began June 11, 1973 by Jerome and Janice Buschur. In 2001 the business moved to their new site at 541 Eastern Ave.



Edwin, Leona, John, and Lizzie Panning in front of 150 E. Main St.

41. 172 E. Main St. First St. Henry Church (built in early 1840's and was 50'x25' in size) and cemetery behind the church (which was moved to the present cemetery 1890-1895). Private residence today.

42. Michael A. Schlegel Furniture Store 1898-1920

C.K. of A. used at one time

Lot was sold to the school in 1940

St. Henry Granville Twp. Branch Library 1982—



43. Frank Hartings Livery barn around 1912

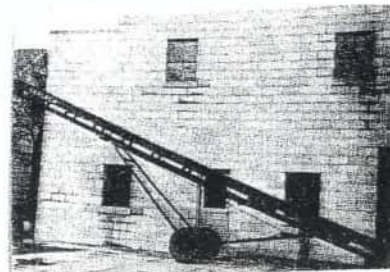
Tony Streaker Implements

Wm Wourms Central Garage 1927

Schroer's Garage

Gerlach Elevators 1952-1957

Now the drive west of 201 E. Main St.

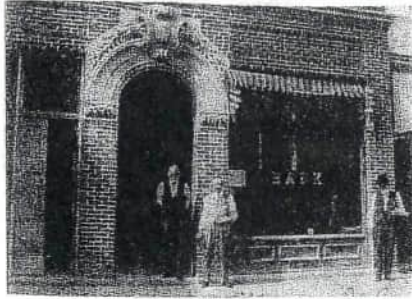


The Gerlach Elevator building

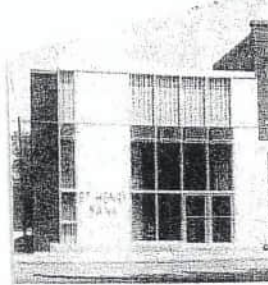


St. Henry School when it was the St. Henry Junior High School

47. 231 E. Main St. St. Henry Bank built in 1906 by J.H. Romer, Henry Romer, William H. Romer, John G. Romer, and Edward F. Romer. The bank had been organized in 1904. The first building was occupied until 1924 when a new building was constructed which is still part of the bank today.

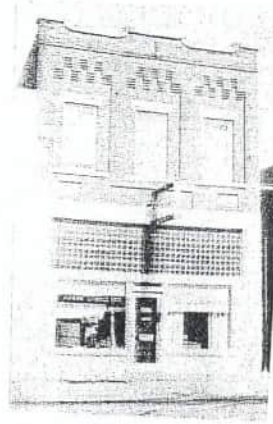


The early bank building



The bank in the early 1970's

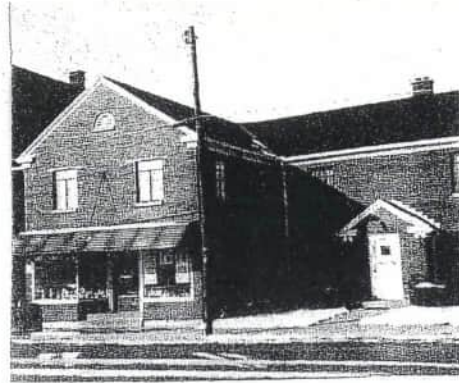
48. 241 E. Main St. Gels Hardware 1905-1927 (business was started on site #49)
St. Henry Hardware (Stein and Francks 1927-1949;
Froning, Harlet, and Dorsten 1949-1958;
Ben Romer 1958-1965
Froning and Associates 1965-1971
Now a part of the St. Henry Bank building



49. 255 E. Main St. once was an old log building which was Wm. Romer's Hardware Store (mowing machines, buggies, farm implements) late 1800's. Business was sold to Frank and John Gels who moved to site #48 in 1905. S.J. Samberg and Alfred Davis (who bought the business from H.M. Winkeljohan in 1907)—wallpaper, stationery, medicines, soda fountain, and an ice cream parlor 1908-1923. Stanley and Loretta Romer 1923-1971 and Loretta (after Stanley's death) from 1971-1990. Old building was replaced in 1940. In 1979 it became Romer-Knueve Pharmacy until 1987 when Mr. Knueve started a separate pharmacy at 314 E. Main. This is today a part of the St. Henry Bank. (See photos on next page.)



Interior of Romer's Store (1923-1940)



Romer's Store (after 1940)

50. 279 E. Main St. was J.H. Romer Store 1889-1903. The west side of the building was built in 1889.

J.J. Romer's General Store 1903-1923. Mrs. Anna Westerheide had a hat shop too in here from about 1907 until J.J. sold the store in 1922. Harry and Harold Romer Funeral Home on top floor. In 1906 the east side of the building was built (281 E. Main St.). It was the St. Henry Bank until 1924.

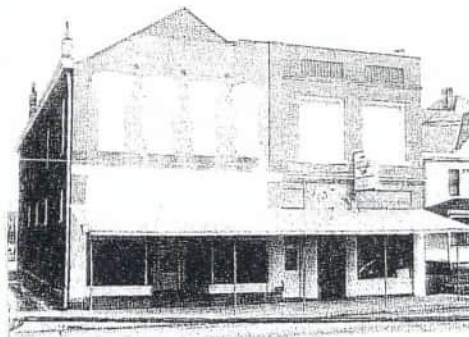
Beckman and Gast Grocery and Dry Goods 1923-1927

Harry Romer Dry Goods (on the west side) sold to Jake Buschor who sold it to J.J. Romer Clothing in 1976 who sold it to St. Henry Furniture and Hardware in 1983 to become part of their store which was already on the east side of the building.

Lowell Romer Grocery Store (on the east side) sold to Wm. Lichtle to Carl Kohn around 1962 to Ben Romer thus becoming the St. Henry Hardware in 1965. In 1973 he sold it to Larry and Pat Balster. In 1981 Ken Coffield sold St. Henry Furniture to the Balsters, and they moved it to the west side of the building. In 1997 St. Henry Hardware and Furniture moved to their new building at 702 N. Eastern Ave.



1900

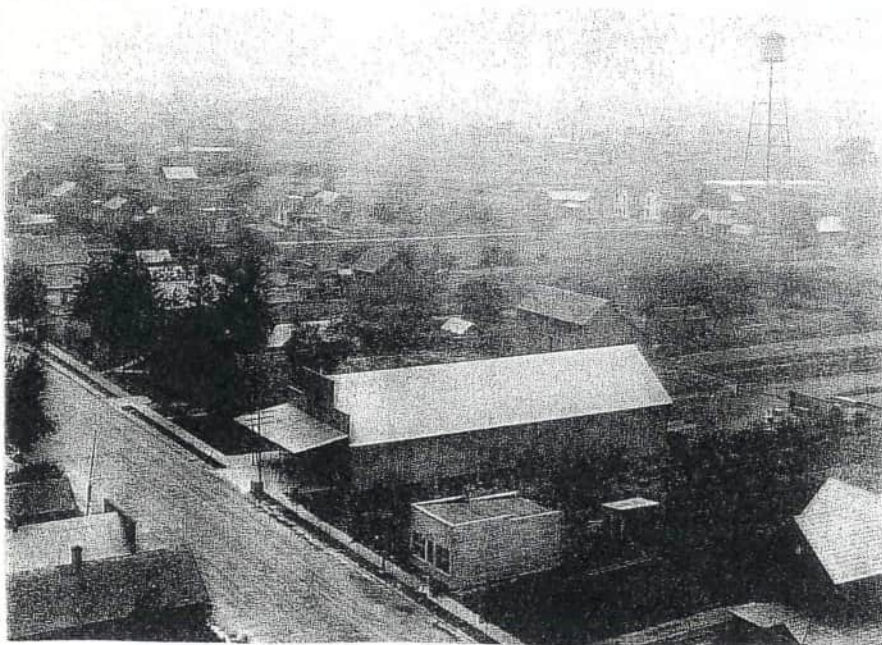


1971

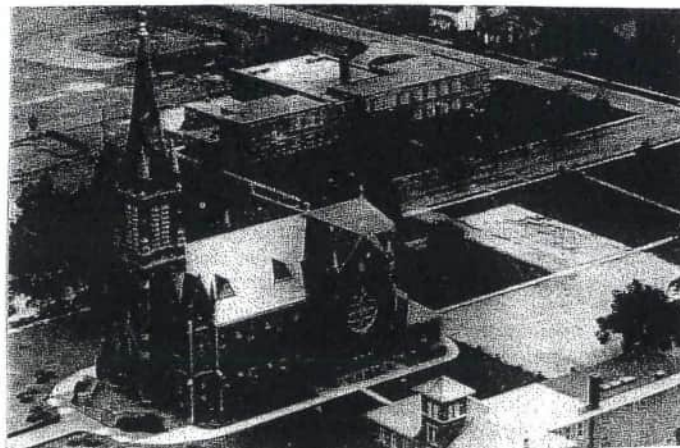
Note: Photo taken from the church steeple in the early 1900's facing west.



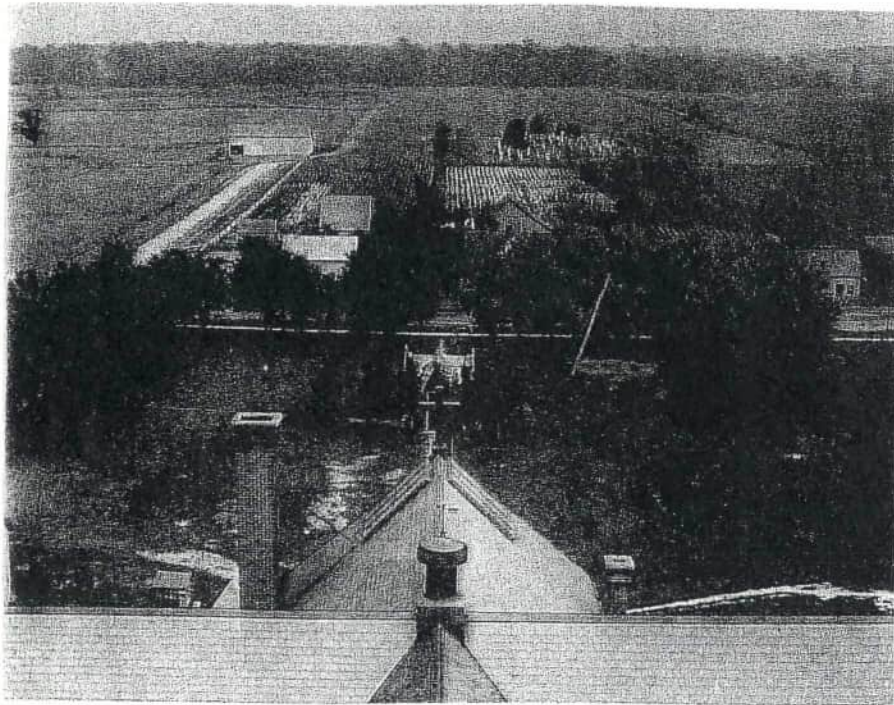
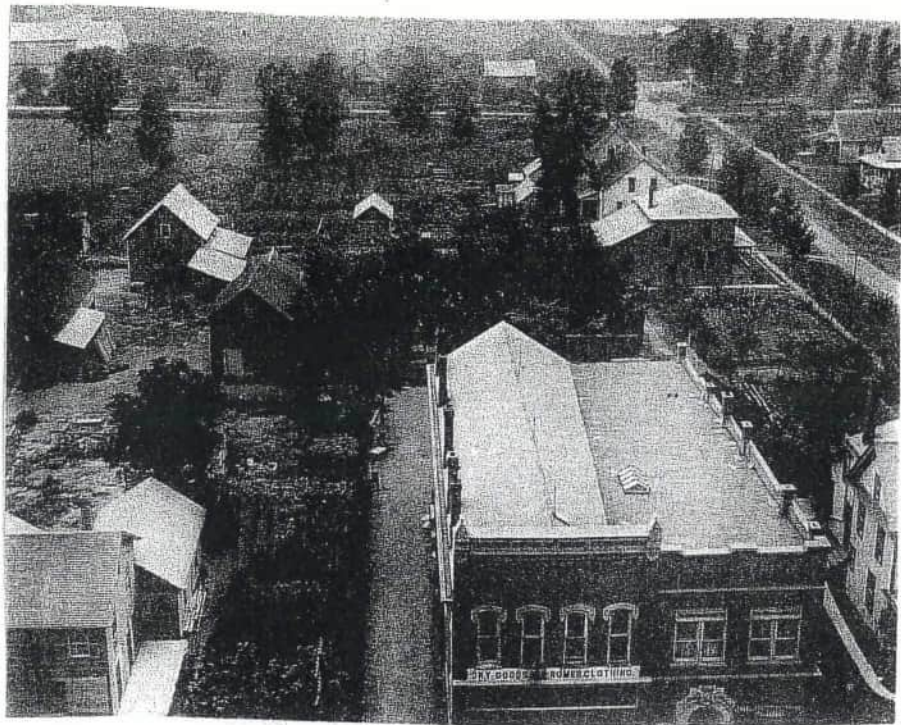
Note: Photo taken from the church steeple in the early 1900's facing northwest.



51. St. Henry Church(1897) Photo shows the church before the elementary school was built in 1961.



Note: Photo taken from church steeple facing north in the early 1900's



Note: Photo taken from church steeple facing south (Grotto #52 in back of church) in the early 1900's.

52. The Grotto was built south of the church in 1907 and was torn down when the elementary school was built in 1961.

The Grotto
(in 1907)



The Grotto in 1948 facing south from the church.



53. St. Henry Rectory (1902)



Church rectory in 1937



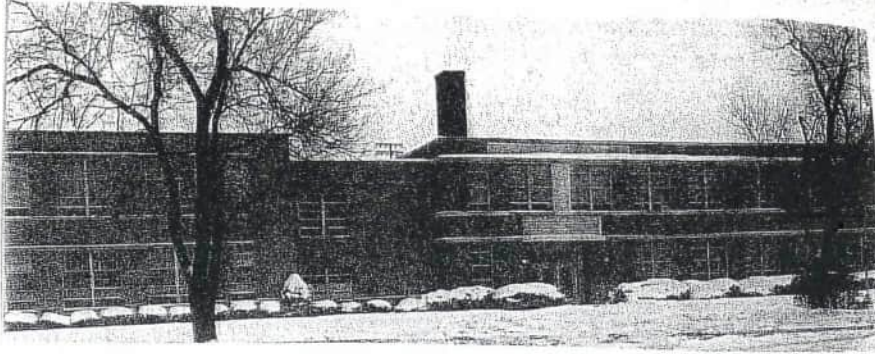
Church rectory in 1971

54. 291 E. Main St. Henry Bernard had this house built in 1898. The Juttés live here now.

55. 162 S. Walnut St. St. Henry Catechetical Center built in 1964.

56. St. Henry Elementary (1961) on Walnut St.

57. St. Henry High School built in 1939 on Walnut St. with additions in 1959 and 1965. It was torn down in June, 2002. A new high school building was constructed to the east of the Middle School building at 381 E. Columbus St., and it opened for classes in September, 2002. (See photo on the next page.)



St. Henry High School in early 1970's facing Walnut St.

58. St. Henry Middle School at 381 E. Columbus St. opened in August, 1980. It was extensively remodeled in 2002.

59. 161 S. Walnut St. Dr. Slusher doctor's office/home 1940-1970
 Dr. Emiliano Feliciano, a doctor, 1970-1990 (It was his office and home for several years.) and Dr. Ted Willmann, a dentist, 1981-1992. Dr. Willmann moved his office to 570 E. Kremer Hoying Road, Suite D, in 1992. After Dr. Feliciano died in 1990, E.R. doctors rotated in the office for a year until Dr. Alvin Berlot took over. Dr. Brown practiced here from September, 1993, until June, 2003, when he moved into his new office at 442 Stachler Dr.

60. Granville Township House 141 S. Walnut St. built in the late 1930's. The St. Henry-Granville Township Library had its start here in 1976 until it moved into its new facilities on Main St. in 1983.

61. 221 N. Walnut St. Fullenkamp Distributors, Inc. soft drinks and ice (from the old Brewery Pond) in early 1930's replaced Conover Creamery in the early 1900's. In the late 1930's beer was being distributed from this building. In 1946 John Fullenkamp's sons (Ray, Louis, Tiny, and Red) took over. It became Mercer Beverage in 1971 and continues to the present.

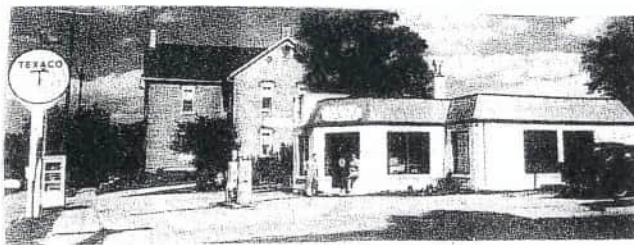
Note: The farmhouse in the photo was located in the country in 1940. The intersection shown is now the junction of Kremer-Hoying Rd. and Walnut St. The farm was owned by A.W. (Tony) Bernard. The area which was once the farm is now called the Bernard Addition. Only the house still stands and is owned by Jim Ross.



62. 301 E. Main St.—Granville Township House (1887) with jail cells in the early 1900's—torn down in 1939. St. Henry Post Office 1982—



63. Anna Doess house built around 1860 and demolished in 1935
312 E. Main St.--Bostick Service Station 1946-1964
310 E. Main St--A building was constructed at this corner which housed Stammen Insurance 1985--present
312 E. Main St. --Paul Howell, attorney, 1985-1988
314 E. Main St.—In 1986 part of the building was used by J.J. Romer Clothing and J.J.'s Cutting Edge barber shop. The barber shop moved to 642 E. Main St. in 1991. Chuck and Peg Knueve first had their Romer-Knueve Pharmacy in Loretta Romer's Store, 255 E. Main, beginning in 1979, and in 1987 they moved to this site as St. Henry Pharmacy at 314 E. Main St. The St. Henry Pharmacy closed in 2001.



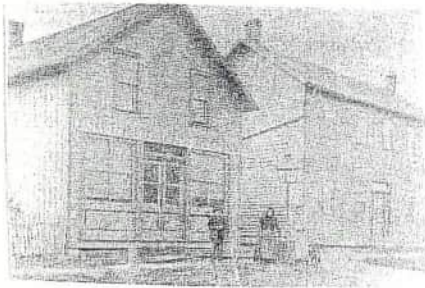
Bostick Service Station

64. 341 E. Main built in the early 1900's by Beckman and Goettemoeller. The post office was on the east side along with a hardware store. A funeral home was on the west side at one time. A furniture store under several owners with Coffields from 1934-1982 J.J. Romer Clothing 1982-1986 until he moved across the street to the 314 E. Main St. site. Other businesses like the Mexican food store, real estate office, and chiropractor office have been in this building. Puppy Love Boutique opened in 2002.

65. 342 E. Main St. Chatt-n-Curl 1980—

66. Site of first post office about where 431 E. Main St. is today. The post office was in the Henry Beckman home here before Mr. Beckman moved it to site #64.

67. Henry Steinlage Leather Tannery (442 E. Main St.) began in about 1851. His residence, built in 1855, (432 E. Main) is now the Trent Buschur family residence. Later the tannery was Ben Wimmers's blacksmith shop around 1907 and the Home Garage in the 1920's. The building was moved to 272 N. Sycamore St. and is now the Ralph Ording residence.



The Steinlage Tannery



Ording residence(once the tannery)



former Steinlage residence as it appeared in 1970's

68. Site of Goettemoeller store—northwest corner of Main and Linn (saloon, a general store, and millinery) burned down in 1898. It is now the site of the St. Henry Ambulance Squad.

69. 511 E. Main Grilliot Service, Schmackers Sinclair Service 1960-1967, Luttmer Body Shop 1969-1988, Carriage Werkes 1988-1997 (moved business to 421 N. Eastern Ave.) and in May, 1999, The Bake Shoppe began in the completely renovated building.

Luttmer's in the early 1970's



70. 521 E. Main St. Jim and Diane Grieve (Jim's Drive-thru Carryout) in 1977. Bob and Janet Borgert as J & B Carryout 1983-1996, and Bohman's Carryout since 1996.

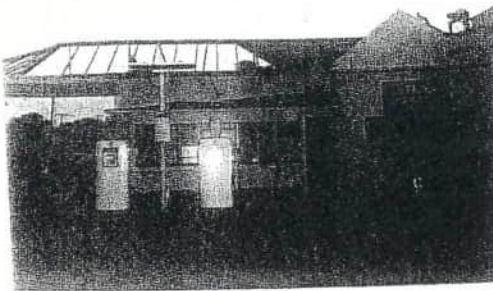
71. 652 E. Main St. Osterholt's Sales and Service was built in 1967. In 1986 the front part became Uhlenhake Refrigeration, and in 1988 it became the Home Place (which had moved from site #24). Osterholt's Body Shop continues in the back of the building.

72. 682 E Main St. Jerry Gels and Ben Romer built the store in 1950. At first it was R & G Market as a Clover Farm Store, in 1952 as a White Villa store, and in 1957 as an IGA Store. Romer started his hardware business in 1958, so the store became Gels I.G. A. In 1972 Jerry's son Charlie took over and now operates the store as Gels Market.

Gels Market started as a Clover Farm Store in 1950.



73. 681 E. Main St. Rengers Service Station 1930-1954
Schroer's 1954-1956
Osterholt's Sohio in 1956 which became Osterholt's BP Station and in 2000 became the Corner Station.



An earlier photo of this site



Osterholt Sohio Service Station in the early 1970's

74. 550 E. Kremer Hoying Rd. Bruns Distributing Co., Inc. (Pepsi products) 1984- and then the St. Henry Fire Department from 1991.

I am sure there are sites that should have been listed that I overlooked, and of course as buildings are being torn down, being renovated, and being built, it's not always so easy to keep up with the historical records. We tend to lose the memories we don't record. St. Henry continues to prosper and change. As it continues to change, let's not forget how the citizens before us laid a foundation for what we have today.

K.R. 4
J.B.A. 2

ALTENHOFFEL'S ADD.

9 8 7 6 5 4 3 2 1

11 12 13 14 15 16 17

BANY WASHING FACTORY

67 68 69 70 71 72 73

WASHINGTON ST.

74 75 76 77 78 79 80 81

ST.

82 83 84 85 86 87 88

ST.

H. Nieberding 3

66 65 64 63 62 61 60

WASHINGTON ST.

59 58 57 56 55 54 53 52

WASHINGTON ST.

51 50 49 48 47 46 45

TOWN HALL

H. Gottemoller 2.75

bara Schalk 3.50

31 32 33 34 35

30 29 28 27 26 25

ROMER'S ADD.

CENTER ST.

11 12 13 14 15

10 9 8 7 6

LOGAN ST.

23 24 25 26 27 28 29

WASHINGTON ST.

30 31 32 33 34 35 36 37

SCHOOL

CATH. CH.

COLUMBUS ST.

38 39 40 41 42 43 44

WASHINGTON ST.

S.G. Mill

Com. Bank 1

Henry Romer 13.50

B. Romer

1900

ST. HENRY

GRANVILLE TWP.

CINCINNATI NORTHERN Stock Pen R.R. DEPT

22 21 20 19 18 17 16

SYCAMORE ST.

Henry Ahlers 80

15 14 13 12 11 10 9 8

SYCAMORE ST.

CEM.

7 6 5 4 3 2 1

WALNUT ST.

B. Romer 77

St. Henry, Ohio

From the Mercer County, Ohio map
(copyright 2000, The National Survey, Inc.)

